



**Extended Range Weather Forecast**  
**For Himachal Pradesh**  
**Date of issue: 13<sup>th</sup> May 2021**

1. Observed weather condition during last week (i.e. from 06<sup>th</sup> May to 13<sup>th</sup> May )

**Rainfall:**

The weekly average rainfall realized during the week = 21.9

The normal rainfall for the week = 17.3

The percentage departure from normal during the week = 26%

**Maximum Temperature (Tmax) and Minimum Temperature (Tmin) in Himachal Pradesh**

Area	T max (°C)		T min (°C)	
	Average	Departure	Average	Departure
Low Hills <1000m	32.0	-2.3	17.5	0.7
Mid Hills 1000-2000m	23.8	-2.6	12.9	1.0
High Hills >2000m	17.5	-2.2	6.8	0.1

Highest maximum temperature over the state during the week = 36.7(Una) on 10.05.2021

**Forecasts for Category and Trend**

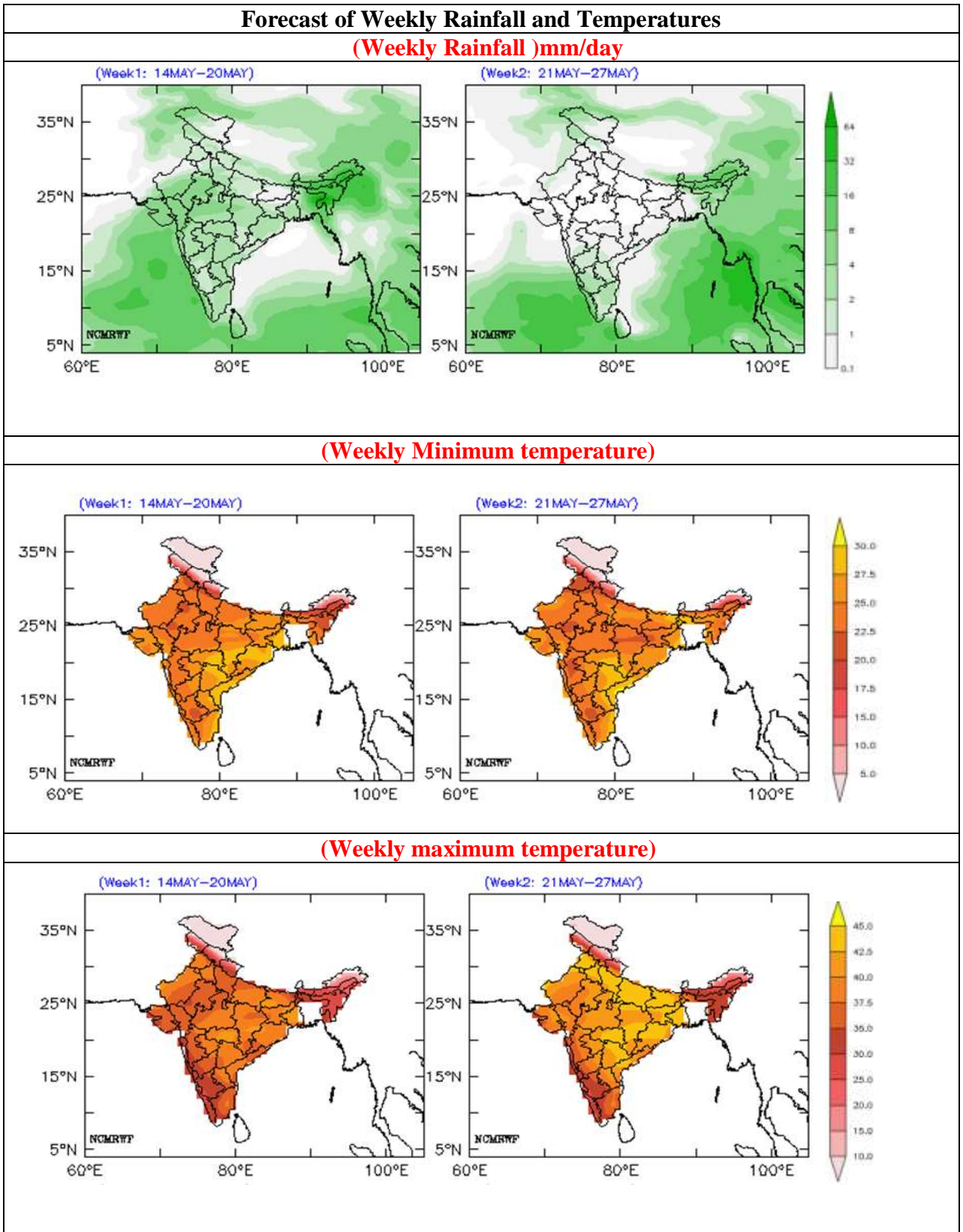
(Week- 1; 14<sup>th</sup> May to 20<sup>th</sup> May) & (Week- 2; 21<sup>st</sup> May to 27<sup>th</sup> May)

- The Western Disturbance as a trough in mid & upper tropospheric westerlies lies with its axis at 5.8 km above mean sea level now runs roughly along longitude 74°E to the north of latitude 28°N.

Forecasts			
Week	Rainfall	Minimum Temperature	Maximum Temperature
Week-1 14 <sup>th</sup> May to 20 <sup>th</sup> May	Above Normal	Below Normal	Below Normal
Week-2 21 <sup>st</sup> May to 27 <sup>th</sup> May	Below Normal	Normal	Normal

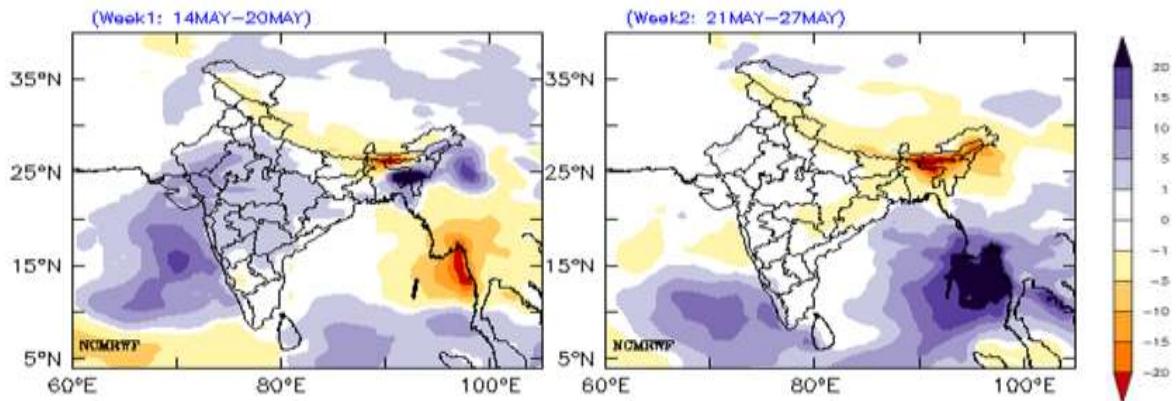
### 3 Forecast for any extreme weather

- During week-1 rainfall is likely to be Above Normal over Himachal Pradesh and Below Normal during week -2.
- The maximum temperature will be below normal during week -1 and normal during week- 2.

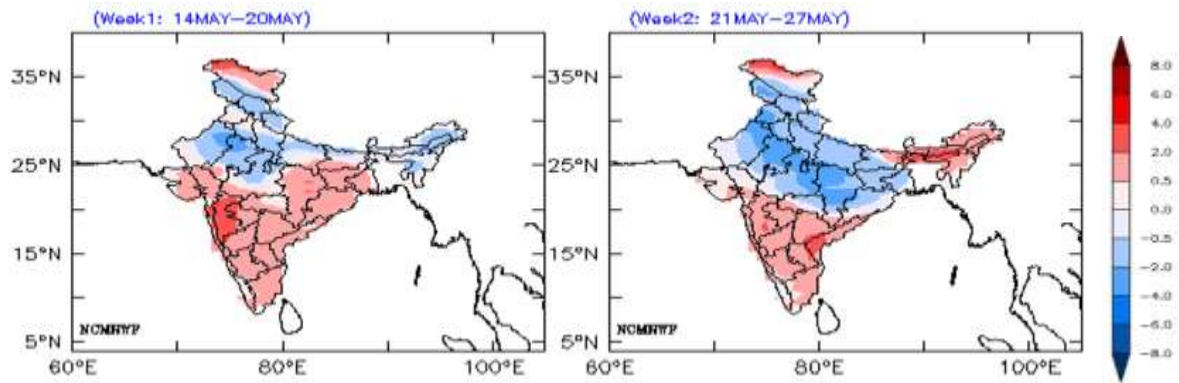


## Anomaly of Weekly Rainfall and Temperatures

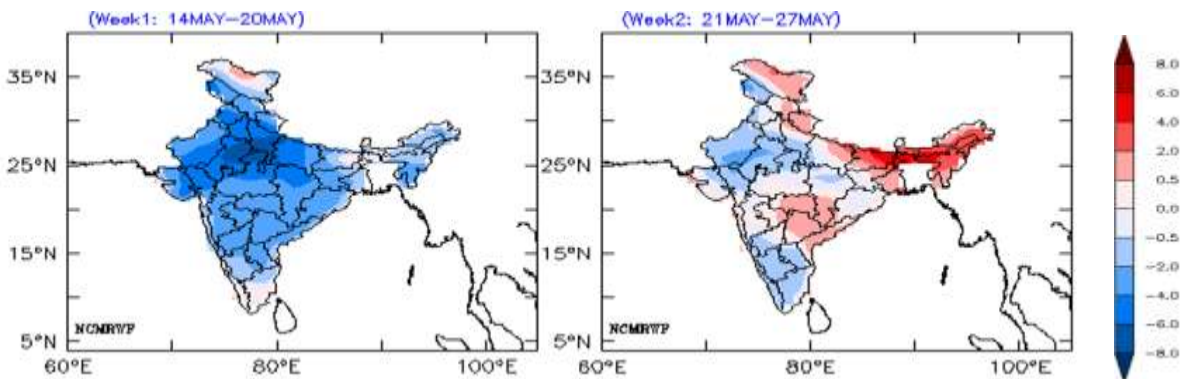
### (Weekly Rainfall )mm/day



### (Weekly Minimum temperature)



### (Weekly maximum temperature)



## Realized Precipitation

**Seasonal Rainfall till last week  
(01<sup>th</sup> March to 13<sup>th</sup> May)**

**Past week Rainfall  
(06<sup>th</sup> May to 13<sup>th</sup> May)**

**INDIA METEOROLOGICAL DEPARTMENT  
MC SHIMLA**

**Rainfall % Departures from the Long Period Averages  
for Districts in HIMACHAL PRADESH**

PERIOD - 01.03.2021 - 13.05.2021



**LEGEND:** L. EXCESS (>160% OR MORE) | EXCESS (120% TO <160%) | NORMAL (100% TO <120%) | DEFICIENT (20% TO <100%) | L. DEFICIENT (<20% TO <100%) | NO RAIN | NO DATA

**INDIA METEOROLOGICAL DEPARTMENT  
MC SHIMLA**

**Rainfall % Departures from the Long Period Averages  
for Districts in HIMACHAL PRADESH**

WEEK ENDING ON - 13.05.2021



**LEGEND:** L. EXCESS (>160% OR MORE) | EXCESS (120% TO <160%) | NORMAL (100% TO <120%) | DEFICIENT (20% TO <100%) | L. DEFICIENT (<20% TO <100%) | NO RAIN | NO DATA